

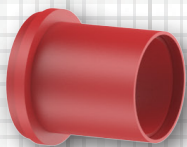


**JackMoon**<sup>®</sup>  
 Sealing Devices

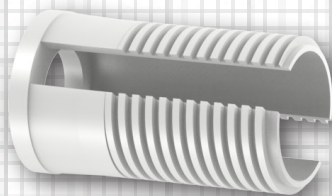
**PRODUCT COMPONENTS**

JackMoon<sup>®</sup> Fiber Optic Simplex Plugs consist of four (4) major components including the Split Sealing Collar (blue), Split Upper Flange (white), Split Sealing Gasket (red), and Split Threaded Flange (white). Depending on the application, there may also be up to three (3) additional bushings provided with the Plug.

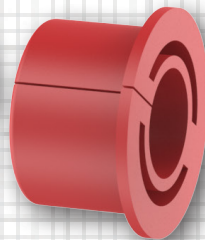
SPLIT BUSHING(S)



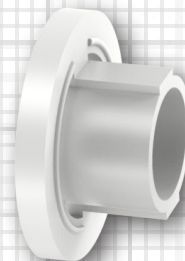
SPLIT THREADED FLANGE



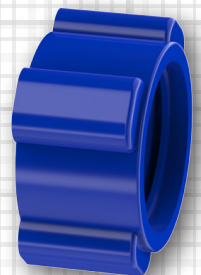
SPLIT SEALING GASKET



SPLIT UPPER FLANGE



SPLIT SEALING COLLAR



Manufactured by



[cableaccessories.ie](http://cableaccessories.ie) +353 1 464 1477 [sales@cableaccessories.ie](mailto:sales@cableaccessories.ie)

## INSTALLATION INSTRUCTIONS

- 1 Begin by unscrewing and removing the blue Split Sealing Collar from the Fiber Optic Simplex Plug assembly. Reference *Figure A*.
- 2 Separate the blue Split Sealing Collar into two pieces for easier installation around an in-place cable or innerduct. Reference *Figure B*.
- 3 Most of our JackMoon® Fiber Optic Simplex Plugs come with additional bushings which are included for sealing around different sizes of in-place cables. These allow each plug to accommodate a wider range of cable diameters. If these additional bushings are required for your installation or application, proceed to separate and split the bushing(s), and place them around the in-place cable. When placing the bushing(s) around the cable, do not let the splits in the bushing(s) line up. Reference *Figure C*.
- 4 Split open the Split Sealing Gasket and Split Upper / Threaded Flange assembly unit by hand and place it around the bushing(s) (if used) and cable / innerduct to be sealed. Reference *Figure D*. Do not allow the splits in the bushing(s) to line up with the split in the Split Sealing Gasket.
- 5 Re-assemble the blue Split Sealing Collar around the in-place cable by sliding the two halves together. Line up the re-assembled collar with the threads on the Split Upper Flange and screw onto the assembly.
- 6 To finish the installation, slide the entire, assembled Fiber Optic Simplex Plug along the in-place cable or innerduct and into the main duct. Reference *Figure E*. Once fully seated into the main duct, tighten the blue Split Sealing Collar by hand while holding the main assembly in place. Continue tightening the blue Split Sealing Collar until the assembly creates a snug fit inside the duct.

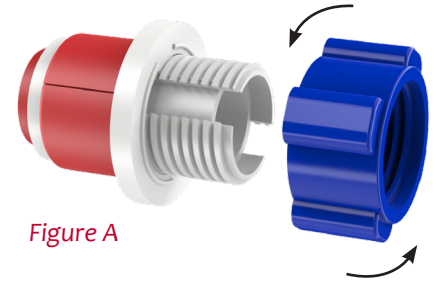


Figure A

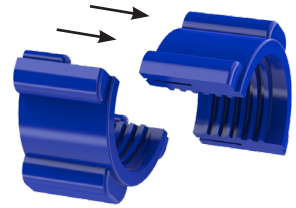


Figure B

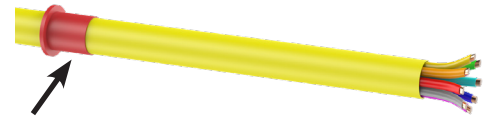


Figure C

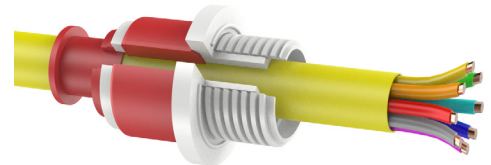


Figure D

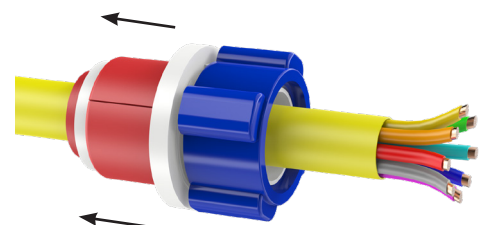


Figure E