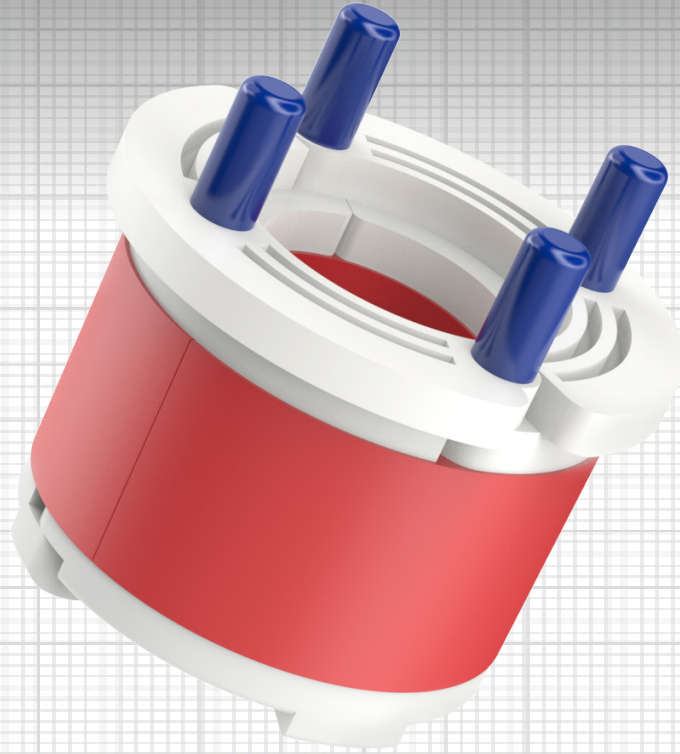


KEY FEATURES

- Water and air resistant
- Installation around in-place cables
- Excellent conduit or cable support
- Made from recyclable materials
- Stainless steel fasteners
- Easy to install
- Protects and organizes
- Corrosion proof
- Perfect for manholes, buildings, and cabinets
- Fast lead times

**Split duct plugs that organize and anchor wires, cables, and conduit within raceway systems**

Wedge Seal™ Entry Seal Duct Plug simplex, triplex and quadplex effectively organize, anchor, and seal subducts, conduits, and cables. Utilizing a split design, these seals can be installed almost anywhere along a cable network.

They are perfect for retrofits.

Manufactured from a combination of high-impact plastic components and pliable, yet durable, gaskets. These Entry Seal Duct Plugs prevent the incursion of water and sedimentation into costly duct banks, raceway systems, and fiber networks while also confining potential problems like dangerous vapors to their source.

For a long lasting and professional installation these seals use stainless steel fasteners and can be installed with widely available hand-tools.

Many of our sizes are JackMoon® cross-referenced for a seamless part number conversion.

Manufactured by



cableaccessories.ie +353 1 464 1477 sales@cableaccessories.ie

SPECIFICATIONS

PRODUCT NUMBER	JACKMOON CROSS REFERENCE NO	EACH SIZE (MM)	CONDUIT I.D. (MM)	PORT DIAM RANGE (MM)
7140-100	JM-SIM-40S118S*	100	100.33-105.41	24.89-25.91
7140-105	JM-SIM-40S118S*	100	100.33-105.41	26.16-27.18
7140-110	JM-SIM-40S118S*	100	100.33-105.41	27.43-28.45
7140-115	JM-SIM-40S118S*	100	100.33-105.41	28.70-29.72
7140-120	JM-SIM-40S136S*	100	100.33-105.41	29.97-30.99
7140-125	JM-SIM-40S136S*	100	100.33-105.41	31.24-32.26
7140-130	JM-SIM-40S136S*	100	100.33-105.41	32.51-33.53
7140-135	JM-SIM-40S136S*	100	100.33-105.41	33.78-34.80
7140-140	JM-SIM-40S196SB*	100	100.33-105.41	35.05-36.07
7140-145	JM-SIM-40S196SB*	100	100.33-105.41	36.32-37.34
7140-150	JM-SIM-40S196SB*	100	100.33-105.41	37.59-38.61
7140-155	JM-SIM-40S196SB*	100	100.33-105.41	38.86-39.88
7140-160	JM-SIM-40S196SB*	100	100.33-105.41	40.13-41.15
7140-165	JM-SIM-40S196SB*	100	100.33-105.41	41.40-42.42
7140-170	JM-SIM-40S196SB*	100	100.33-105.41	42.67-43.69
7140-175	JM-SIM-40S196SB*	100	100.33-105.41	43.94-44.96
7140-180	JM-SIM-40S196SB*	100	100.33-105.41	45.21-46.23
7140-185	JM-SIM-40S196SB*	100	100.33-105.41	46.48-47.50
7140-190	JM-SIM-40S196SB*	100	100.33-105.41	47.75-48.77
7140-195	JM-SIM-40S196SB*	100	100.33-105.41	49.02-50.04
7140-200		100	100.33-105.41	50.30-51.05
7140-205	JM-SIM-40S216S*	100	100.33-105.41	51.56-52.58
7140-210	JM-SIM-40S216S*	100	100.33-105.41	52.83-53.85
7140-215	JM-SIM-40S216S*	100	100.33-105.41	54.10-55.12
7140-220		100	100.33-105.41	55.37-56.39
7140-225	JM-SIM-40S236S*	100	100.33-105.41	56.64-57.66
7140-230	JM-SIM-40S236S*	100	100.33-105.41	57.91-58.93
7140-235	JM-SIM-40S236S*	100	100.33-105.41	59.18-60.20
7140-240		100	100.33-105.41	60.45-61.49
7140-245		100	100.33-105.41	61.72-62.74

ABOUT CABLE ACCESSORIES LTD

Cable Accessories Ltd provides integrated solutions across a broad range of industries. Founded in 1985 as a Raychem distributor, we supply the Building, Telecom, Manufacturing, Pharmaceutical, Service and Data Centre industries.

Based in Ballymount Dublin we operate with complete flexibility and commitment to offering bespoke, in-house design tailored to customer and project requirements. With over 30 years experience our customers know they can trust us.

Cable Accessories Ltd is an ISO 9001:2015 certified company.

Cal Am Manufacturing and JackMoon are registered trademarks of Stratus Manufacturing, Inc.
© 2022 All Rights Reserved. Cal Am Manufacturing. El Cajon, CA 92020

Unit 5, red cow interchange Estate
Turnpike Road, Ballymount
Dublin 22, Ireland, D22FP22

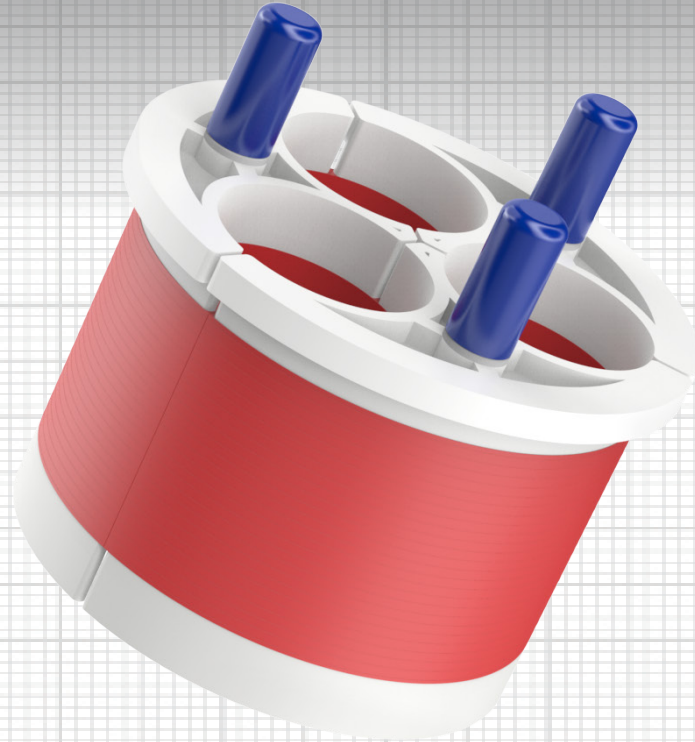
+353 1 464 1477
+353 1 464 1487

sales@cableaccessories.ie

www.cableaccessories.ie

KEY FEATURES

- Water and air resistant
- Installation around in-place cables
- Excellent conduit or cable support
- Made from recyclable materials
- Stainless steel fasteners
- Easy to install
- Protects and organizes
- Corrosion proof
- Perfect for manholes, buildings, and cabinets
- Fast lead times

**Split duct plugs that organize and anchor wires, cables, and conduit within raceway systems**

Wedge Seal™ Entry Seal Duct Plug simplex, triplex and quadplex effectively organize, anchor, and seal subducts, conduits, and cables. Utilizing a split design, these seals can be installed almost anywhere along a cable network.

They are perfect for retrofits.

Manufactured from a combination of high-impact plastic components and pliable, yet durable, gaskets. These Entry Seal Duct Plugs prevent the incursion of water and sedimentation into costly duct banks, raceway systems, and fiber networks while also confining potential problems like dangerous vapors to their source.

For a long lasting and professional installation these seals use stainless steel fasteners and can be installed with widely available hand-tools.

Many of our sizes are JackMoon® cross-referenced for a seamless part number conversion.

Manufactured by



cableaccessories.ie +353 1 464 1477 sales@cableaccessories.ie

SPECIFICATIONS

JACKMOON CROSS				
PRODUCT NUMBER	REFERENCE NO	EACH SIZE (MM)	CONDUIT I.D. (MM)	PORT DIAM RANGE (MM)
7340-075		100	100.33-105.41	18.54-19.56
7340-080		100	100.33-105.41	19.81-20.83
7340-085		100	100.33-105.41	21.08-22.10
7340-090		100	100.33-105.41	22.35-23.37
7340-095		100	100.33-105.41	23.62-24.64
7340-100		100	100.33-105.41	24.89-25.91
7340-105	JM-TRI-40B122SG*	100	100.33-105.41	26.16-27.18
7340-110	JM-TRI-40B122SG*	100	100.33-105.41	27.43-28.45
7340-110	JM-TRI-40B122SG*	100	100.33-105.41	28.70-29.72
7340-120	JM-TRI-40B122SG* / JM-TRI-40B136S*	100	100.33-105.41	29.97-30.99
7340-125	JM-TRI-40B136S*	100	100.33-105.41	31.24-32.26
7340-130	JM-TRI-40B136S* / JM-TRI-40B142SG*	100	100.33-105.41	32.51-33.53
7340-135	JM-TRI-40B136S* / JM-TRI-40B142SG* / JM-TRI-40B150SG*	100	100.33-105.41	33.78-34.80
7340-140	JM-TRI-40B150SG*	100	100.33-105.41	35.05-36.07
7340-145	JM-TRI-40B150SG*	100	100.33-105.41	36.32-37.34
7340-150	JM-TRI-40B167S*	100	100.33-105.41	37.59-38.61
7340-155	JM-TRI-40B167S*	100	100.33-105.41	38.86-39.88
7340-160	JM-TRI-40B167S*	100	100.33-105.41	40.13-41.15
7340-165	JM-TRI-40B167S*	100	100.33-105.41	41.40-42.42
7340-XXX		100	100.33-105.41	CUSTOM
7350-075		125	125.-73-130.81	18.54-19.59
7350-080		125	125.-73-130.81	19.81-20.83
7350-085		125	125.-73-130.81	21.08-22.10
7350-090		125	125.-73-130.81	22.35-23.37
7350-095		125	125.-73-130.81	23.62-24.64
7350-100		125	125.-73-130.81	24.89-25.91
7350-105		125	125.-73-130.81	26.16-27.18
7350-110		125	125.-73-130.81	27.43-28.45
7350-115		125	125.-73-130.81	28.70-29.72
7350-120		125	125.-73-130.81	29.97-30.99
7350-125		125	125.-73-130.81	31.24-32.26
7350-130		125	125.-73-130.81	32.51-33.53
7350-135		125	125.-73-130.81	33.78-34.80
7350-140		125	125.-73-130.81	35.05-36.07
7350-145		125	125.-73-130.81	36.32-37.34
7350-150	JM-TRI-50B167SG*	125	125.-73-130.81	37.59-38.61
7350-155	JM-TRI-50B167SG*	125	125.-73-130.81	38.86-39.88
7350-160	JM-TRI-50B167SG*	125	125.-73-130.81	40.13-41.15

cableaccessories.ie +353 1 464 1477 sales@cableaccessories.ie

SPECIFICATIONS

JACKMOON CROSS				
PRODUCT NUMBER	REFERENCE NO	EACH SIZE (MM)	CONDUIT I.D. (MM)	PORT DIAM RANGE (MM)
7340-075		100	100.33-105.41	18.54-19.56
7340-080		100	100.33-105.41	19.81-20.83
7340-085		100	100.33-105.41	21.08-22.10
7340-090		100	100.33-105.41	22.35-23.37
7340-095		100	100.33-105.41	23.62-24.64
7340-100		100	100.33-105.41	24.89-25.91
7340-105	JM-TRI-40B122SG*	100	100.33-105.41	26.16-27.18
7340-110	JM-TRI-40B122SG*	100	100.33-105.41	27.43-28.45
7340-110	JM-TRI-40B122SG*	100	100.33-105.41	28.70-29.72
7340-120	JM-TRI-40B122SG* / JM-TRI-40B136S*	100	100.33-105.41	29.97-30.99
7340-125	JM-TRI-40B136S*	100	100.33-105.41	31.24-32.26
7340-130	JM-TRI-40B136S* / JM-TRI-40B142SG*	100	100.33-105.41	32.51-33.53
7340-135	JM-TRI-40B136S* / JM-TRI-40B142SG* / JM-TRI-40B150SG*	100	100.33-105.41	33.78-34.80
7340-140	JM-TRI-40B150SG*	100	100.33-105.41	35.05-36.07
7340-145	JM-TRI-40B150SG*	100	100.33-105.41	36.32-37.34
7340-150	JM-TRI-40B167S*	100	100.33-105.41	37.59-38.61
7340-155	JM-TRI-40B167S*	100	100.33-105.41	38.86-39.88
7340-160	JM-TRI-40B167S*	100	100.33-105.41	40.13-41.15
7340-165	JM-TRI-40B167S*	100	100.33-105.41	41.40-42.42
7340-XXX		100	100.33-105.41	CUSTOM
7350-075		125	125.-73-130.81	18.54-19.59
7350-080		125	125.-73-130.81	19.81-20.83
7350-085		125	125.-73-130.81	21.08-22.10
7350-090		125	125.-73-130.81	22.35-23.37
7350-095		125	125.-73-130.81	23.62-24.64
7350-100		125	125.-73-130.81	24.89-25.91
7350-105		125	125.-73-130.81	26.16-27.18
7350-110		125	125.-73-130.81	27.43-28.45
7350-115		125	125.-73-130.81	28.70-29.72
7350-120		125	125.-73-130.81	29.97-30.99
7350-125		125	125.-73-130.81	31.24-32.26
7350-130		125	125.-73-130.81	32.51-33.53
7350-135		125	125.-73-130.81	33.78-34.80
7350-140		125	125.-73-130.81	35.05-36.07
7350-145		125	125.-73-130.81	36.32-37.34
7350-150	JM-TRI-50B167SG*	125	125.-73-130.81	37.59-38.61
7350-155	JM-TRI-50B167SG*	125	125.-73-130.81	38.86-39.88
7350-160	JM-TRI-50B167SG*	125	125.-73-130.81	40.13-41.15

cableaccessories.ie +353 1 464 1477 sales@cableaccessories.ie

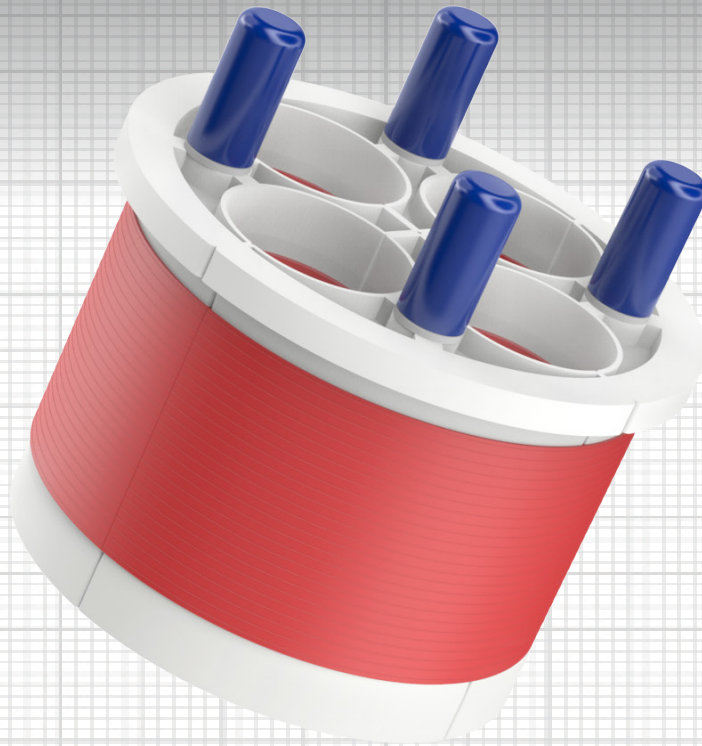
SPECIFICATIONS

PRODUCT NUMBER	JACKMOON CROSS REFERENCE NO	EACH SIZE (MM)	CONDUIT I.D. (MM)	PORT DIAM RANGE (MM)
7350-165	JM-TRI-50B167SG* / JM-TRI-50B177SG*	125	125.73-130.81	41.40-42.42
7350-170	JM-TRI-50B177SG*	125	125.73-130.81	42.67-43.69
7350-175	JM-TRI-50B177SG*	125	125.73-130.81	43.94-46.23
7350-180		125	125.73-130.81	45.21-46.23
7350-XXX		125	125.73-130.81	CUSTOM
7360-075		150	151.38-156.21	18.54-19.56
7360-080		150	151.38-156.21	19.81-20.83
7360-085		150	151.38-156.21	21.08-22.10
7360-090		150	151.38-156.21	22.35-23.37
7360-095		150	151.38-156.21	23.62-24.64
7360-100		150	151.38-156.21	24.89-25.91
7360-105		150	151.38-156.21	26.16-27.18
7360-110		150	151.38-156.21	27.43-28.45
7360-115		150	151.38-156.21	28.70-29.72
7360-120	JM-TRI-60B136SG*	150	151.38-156.21	29.97-30.99
7360-125	JM-TRI-60B136SG*	150	151.38-156.21	31.24-32.26
7360-130	JM-TRI-60B136SG*	150	151.38-156.21	32.51-33.53
7360-135	JM-TRI-60B136SG*	150	151.38-156.21	33.78-34.80
7360-140		150	151.38-156.21	35.05-36.07
7360-145		150	151.38-156.21	36.32-37.34
7360-150	JM-TRI-60B167SG*	150	151.38-156.21	37.59-38.61
7360-155	JM-TRI-60B167SG*	150	151.38-156.21	38.86-39.88
7360-160	JM-TRI-60B167SG*	150	151.38-156.21	40.13-41.15
7360-165	JM-TRI-60B167SG* / JM-TRI-60B177SG*	150	151.38-156.21	41.40-42.42
7360-170	JM-TRI-60B177SG*	150	151.38-156.21	42.67-43.69
7360-175	JM-TRI-60B177SG*	150	151.38-156.21	43.94-44.96
7360-180		150	151.38-156.21	45.21-46.23
7360-185	JM-TRI-60B196SG*	150	151.38-156.21	46.48-47.50
7360-190	JM-TRI-60B196SG*	150	151.38-156.21	47.75-48.77
7360-195	JM-TRI-60B196SG*	150	151.38-156.21	49.02-50.04
7360-XXX		150	151.38-156.21	CUSTOM
7380-240		200	196.60-201.68	60.45-61.49
7380-245		200	196.60-201.68	61.72-62.74
7380-250		200	196.60-201.68	62.99-64.01
7380-255		200	196.60-201.68	64.26-65.28
7380-260		200	196.60-201.68	65.53-66.55
7380-265		200	196.60-201.68	66.80-67.82
7380-270		200	196.60-201.68	68.07-69.01
7380-XXX		200	196.60-201.68	CUSTOM

cableaccessories.ie +353 1 464 1477 sales@cableaccessories.ie

KEY FEATURES

- Water and air resistant
- Installation around in-place cables
- Excellent conduit or cable support
- Made from recyclable materials
- Stainless steel fasteners
- Easy to install
- Protects and organizes
- Corrosion proof
- Perfect for manholes, buildings, and cabinets
- Fast lead times



Split duct plugs that organize and anchor wires, cables, and conduit within raceway systems

Wedge Seal™ Entry Seal Duct Plug simplex, triplex and quadplex effectively organize, anchor, and seal subducts, conduits, and cables. Utilizing a split design, these seals can be installed almost anywhere along a cable network.

They are perfect for retrofits.

Manufactured from a combination of high-impact plastic components and pliable, yet durable, gaskets. These Entry Seal Duct Plugs prevent the incursion of water and sedimentation into costly duct banks, raceway systems, and fiber networks while also confining potential problems like dangerous vapors to their source.

For a long lasting and professional installation these seals use stainless steel fasteners and can be installed with widely available hand-tools.

Many of our sizes are JackMoon® cross-referenced for a seamless part number conversion.

Manufactured by



cableaccessories.ie +353 1 464 1477 sales@cableaccessories.ie

SPECIFICATIONS

PRODUCT NUMBER	JACKMOON CROSS REFERENCE NO	EACH SIZE (MM)	CONDUIT I.D. (MM)	PORT DIAM RANGE (MM)
7440-075		100	100.33-105.41	18.54-19.56
7440-080		100	100.33-105.41	19.81-20.83
7440-085		100	100.33-105.41	21.08-22.10
7440-090		100	100.33-105.41	22.35-23.37
7440-095		100	100.33-105.41	23.62-24.64
7440-100		100	100.33-105.41	24.89-25.91
7440-105		100	100.33-105.41	26.16-27.18
7440-110		100	100.33-105.41	27.43-28.45
7440-115		100	100.33-105.41	28.70-29.72
7440-120	JM-QUA-40Q136SG*	100	100.33-105.41	29.97-30.99
7440-125	JM-QUA-40Q136SG*	100	100.33-105.41	31.24-32.26
7440-130	JM-QUA-40Q136SG*	100	100.33-105.41	32.51-33.53
7440-XXX		100	100.33-105.41	CUSTOM
7450-075		125	125.73-130.81	18.54-19.56
7450-080		125	125.73-130.81	19.81-20.83
7450-085		125	125.73-130.81	21.08-22.10
7450-090		125	125.73-130.81	22.35-23.37
7450-095		125	125.73-130.81	23.62-24.64
7450-100		125	125.73-130.81	24.89-25.91
7450-105		125	125.73-130.81	26.16-27.18
7450-110		125	125.73-130.81	27.43-28.45
7450-115		125	125.73-130.81	28.70-29.72
7450-120	JM-QUA-50Q136SG*	125	125.73-130.81	29.97-30.99
7450-125	JM-QUA-50Q136SG*	125	125.73-130.81	31.24-32.26
7450-130	JM-QUA-50Q136SG* / JM-QUA-50Q142SG*	125	125.73-130.81	32.51-33.53
7450-135	JM-QUA-50Q136SG* / JM-QUA-50Q142SG* / JM-QUA-50Q150SG*	125	125.73-130.81	33.78-34.80
7450-140	JM-QUA-50Q142SG* / JM-QUA-50Q150SG*	125	125.73-130.81	35.05-36.07
7450-145	JM-QUA-50Q150SG*	125	125.73-130.81	36.32-37.34
7450-150	JM-QUA-50Q150SG* / JM-QUA-50Q167S*	125	125.73-130.81	37.59-38.61
7450-155	JM-QUA-50Q167S*	125	125.73-130.81	38.86-39.88
7450-160	JM-QUA-50Q167S*	125	125.73-130.81	40.13-41.15
7450-165	JM-QUA-50Q167S*	125	125.73-130.81	41.40-42.42
7450-170		125	125.73-130.81	42.67-43.69
7450-175		125	125.73-130.81	43.94-44.96
7450-180		125	125.73-130.81	45.21-46.23
7450-XXX		125	125.73-130.81	CUSTOM
7460-075		150	151.38-156.21	18.54-19.56
7460-080		150	151.38-156.21	19.81-20.83

cableaccessories.ie +353 1 464 1477 sales@cableaccessories.ie

SPECIFICATIONS

PRODUCT NUMBER	JACKMOON CROSS REFERENCE NO	EACH SIZE (MM)	CONDUIT I.D. (MM)	PORT DIAM RANGE (MM)
7460-085		150	151.38-156.21	21.08-22.10
7460-090		150	151.38-156.21	22.35-23.37
7460-095		150	151.38-156.21	23.62-24.64
7460-100		150	151.38-156.21	24.89-25.91
7460-105		150	151.38-156.21	26.16-27.18
7460-110		150	151.38-156.21	27.43-28.45
7460-115		150	151.38-156.21	28.70-29.72
7460-120	JM-QUA-60Q136SG*	150	151.38-156.21	29.97-30.99
7460-125	JM-QUA-60Q136SG*	150	151.38-156.21	31.24-32.26
7460-130	JM-QUA-60Q136SG* / JM-QUA-60Q142SG*	150	151.38-156.21	32.51-33.53
7460-135	JM-QUA-60Q136SG* / JM-QUA-60Q142SG*	150	151.38-156.21	33.78-34.80
7460-140	JM-QUA-60Q142SG*	150	151.38-156.21	35.05-36.07
7460-145		150	151.38-156.21	36.32-37.34
7460-150	JM-QUA-60Q167SG*	150	151.38-156.21	37.59-38.61
7460-155	JM-QUA-60Q167SG*	150	151.38-156.21	38.86-39.88
7460-160	JM-QUA-60Q167SG*	150	151.38-156.21	40.13-41.15
7460-165	JM-QUA-60Q167SG*	150	151.38-156.21	41.40-42.42
7460-170	JM-QUA-60Q192SG*	150	151.38-156.21	42.67-43.69
7460-175	JM-QUA-60Q192SG*	150	151.38-156.21	43.94-44.96
7460-180	JM-QUA-60Q192SG*	150	151.38-156.21	45.21-46.23
7460-185	JM-QUA-60Q192SG*	150	151.38-156.21	46.48-47.50
7460-XXX		150	151.38-156.21	CUSTOM
7480-190		200	196.60-201.68	47.75-48.77
7480-195		200	196.60-201.68	49.02-50.04
7480-200		200	196.60-201.68	50.30-51.05
7480-205		200	196.60-201.68	51.56-52.58
7480-210		200	196.60-201.68	52.83-53.85
7480-215	JM-QUA-80Q238SG*	200	196.60-201.68	54.10-55.12
7480-220	JM-QUA-80Q238SG*	200	196.60-201.68	55.37-56.39
7480-XXX		200	196.60-201.68	CUSTOM

ABOUT CABLE ACCESSORIES LTD

Cable Accessories Ltd provides integrated solutions across a broad range of industries. Founded in 1985 as a Raychem distributor, we supply the Building, Telecom, Manufacturing, Pharmaceutical, Service and Data Centre industries.

Based in Ballymount Dublin we operate with complete flexibility and commitment to offering bespoke, in-house design tailored to customer and project requirements. With over 30 years experience our customers know they can trust us.

Cable Accessories Ltd is an ISO 9001:2015 certified company.

Unit 5, red cow interchange Estate
Turnpike Road, Ballymount
Dublin 22, Ireland, D22FP22

+353 1 464 1477
+353 1 464 1487

sales@cableaccessories.ie

www.cableaccessories.ie